

## CGDI BMW Prog Firmware and Software Update Guide

[CGDI Prog BMW MSV80 key programmer](http://www.cgprogcar.com) is able to update firmware and software on the official site: [www.cgprogcar.com](http://www.cgprogcar.com). Below parts incl. CGDI Prog Firmware and software update instruction.



# CGDI

## Firmware and software update

### Part 1: 5 steps to update CGDI Prog Firmware

Step 1. Connect CGDI Pro device to the computer, open CGDI software.

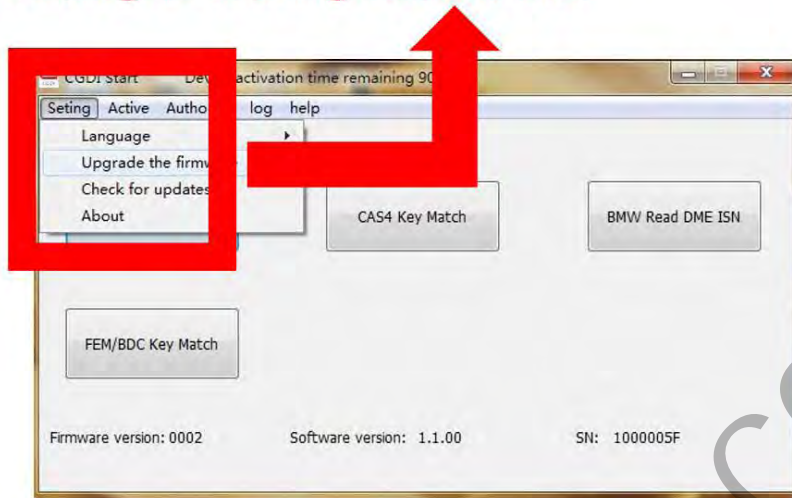
#### Firmware



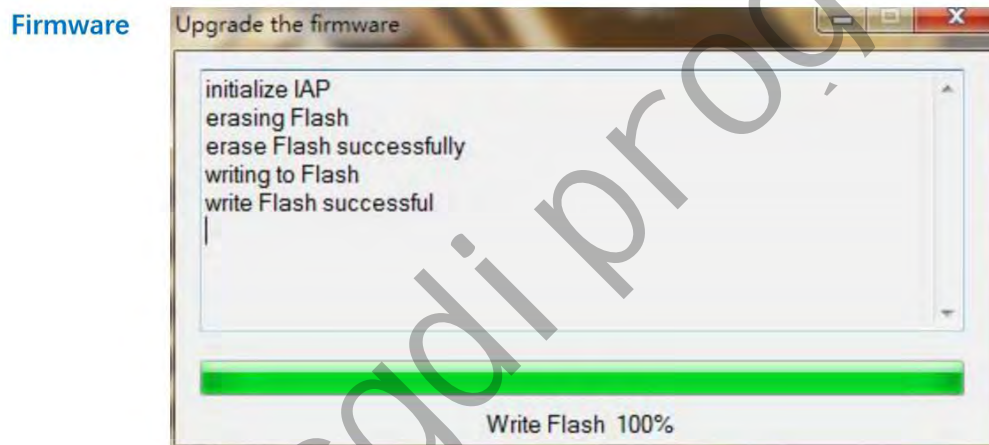
## connect devices, open CGDI software

Step 2. Click on "Setting" and then "Upgrade the firmware", waiting.

**Firmware** select "Setting", click "Upgrade the firmware"  
waiting for entering next interface



Step 3. Updating...

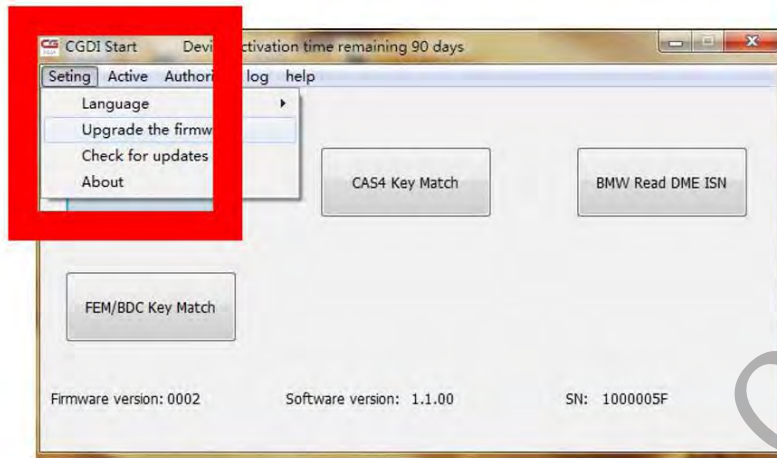


**Firmware is upgrading, please do not optional operation ! ! !**

Step 4. CGDI programmer firmware update successfully, again click on "Upgrade the firmware".

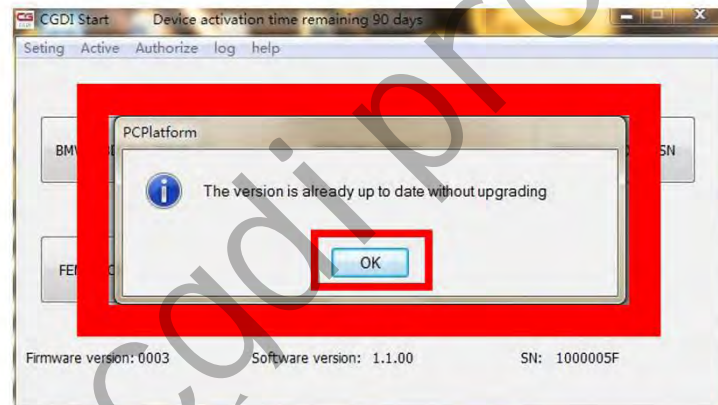
Firmware

**After Firmware updated successfully  
click again "Upgrade the firmware"**



Step 5. Get message reading "The version is already up to date without upgrading". Click on "OK".

Firmware



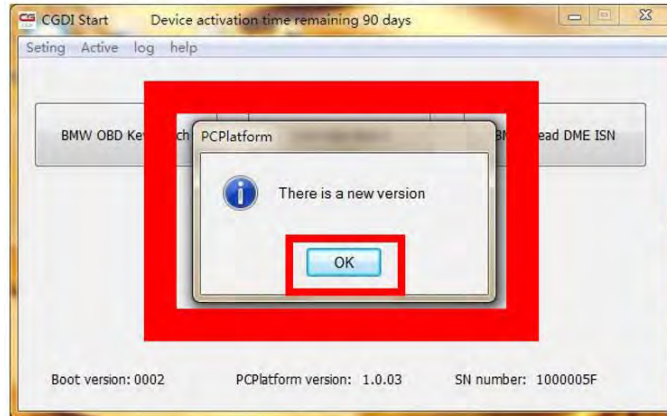
**show "The version is already up to date without upgrading"  
show: firmware updated successfully, can be working normally**

Done

**Part 2: 7 steps to update [CGDI BMW Prog](#) software**

Step 1. Receive message "There is a new version", click on "OK"

## Software

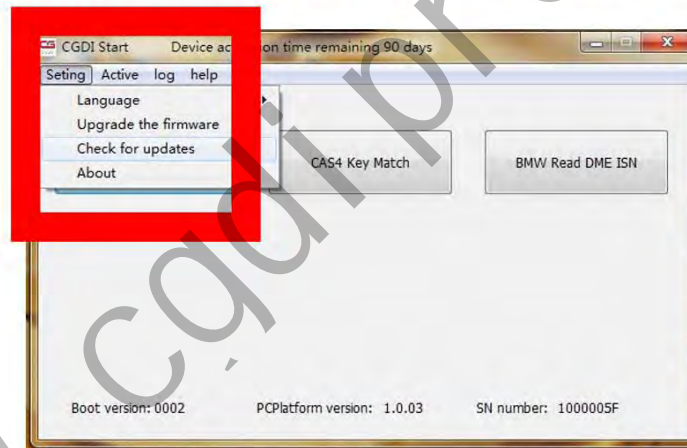


**show "There is a new version" click OK**

Step 2. Click on "Setting", then "Check for updates", waiting until the next dialog box appears.

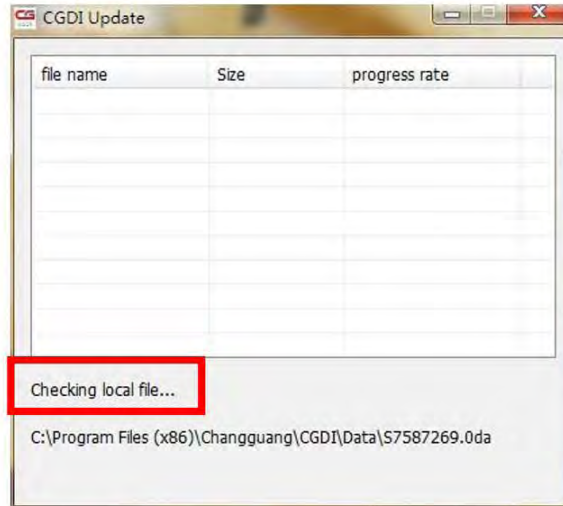
## Software

**select "Setting", click "Check for updates" waiting for entering next interface**



Step 3. Checking local file.

Software



**checking software, pls dont operate !!!**

Step 4. Detects a new file, click "Yes" to update.

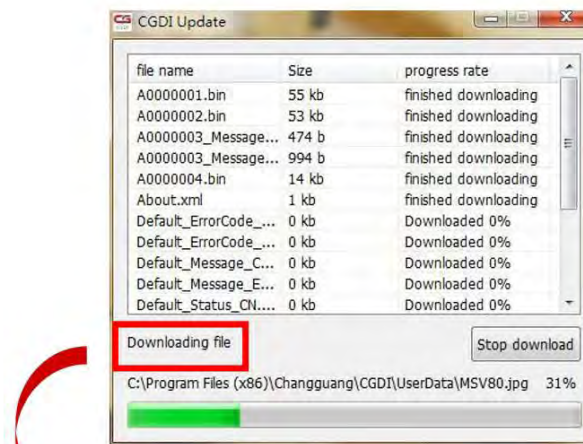
Software



**finished checking, detects new file, click OK**

Step 5. Downloading file.

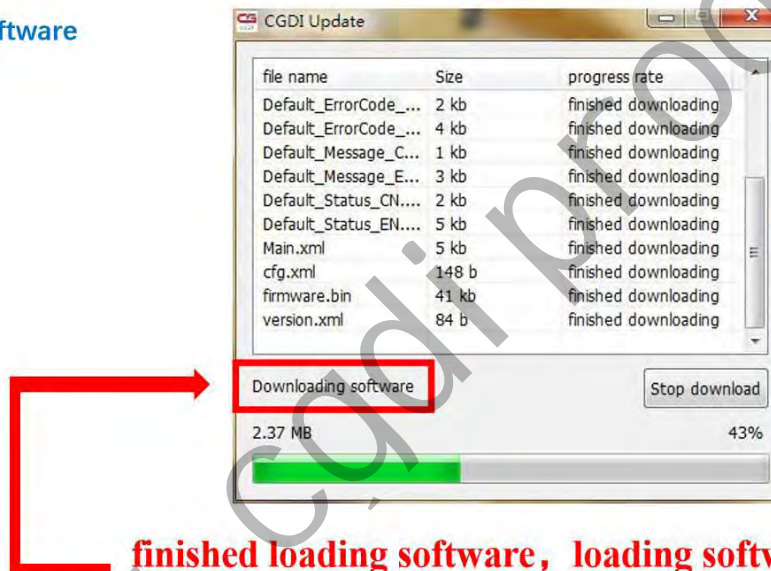
## Software



**downloading file, pls dont operate ! ! !**

Step 6. Finish loading software.

## Software

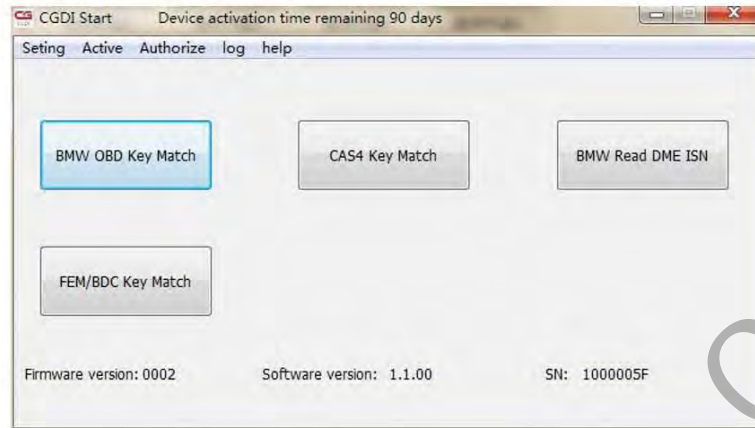


**finished loading software, loading software, pls wait!**

Step 7. CGDI programmer software update successfully. Ready to use the newest software.

Software

**software updated successfully, can working normally**



Done.